



# Toll Manufacturing Service

Provide Manufacture Solutions For Partner's Customize Product Objective



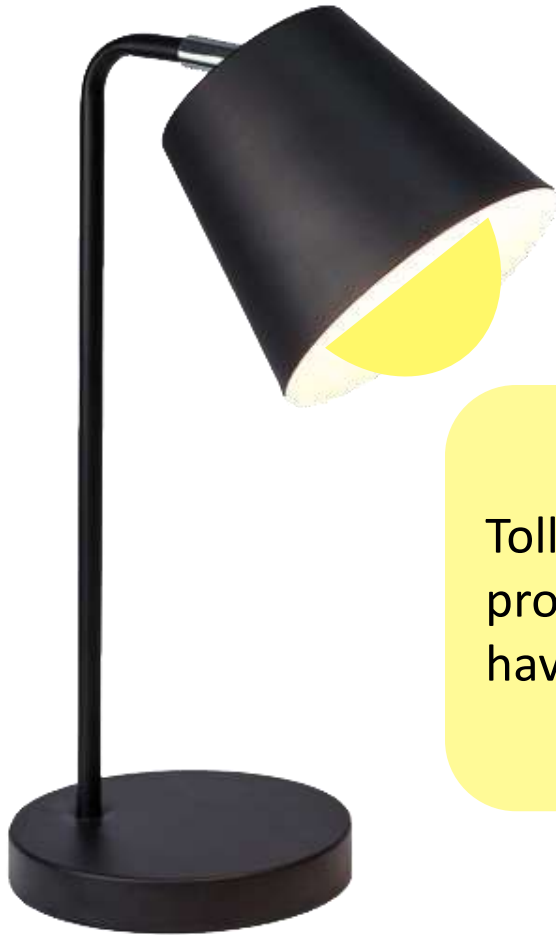


**WELCOME TO PRYDAM FARMA**

# Table Of Contents

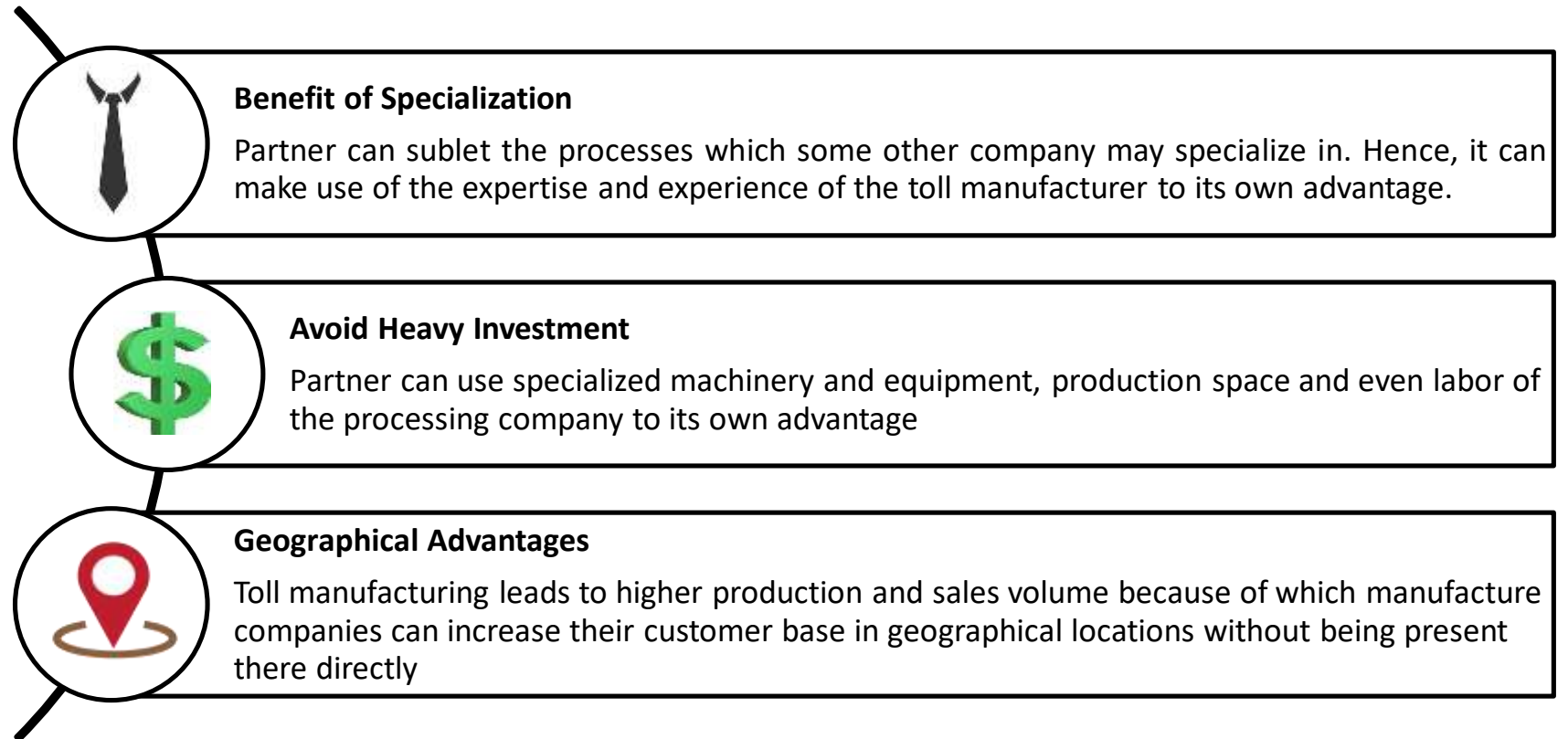
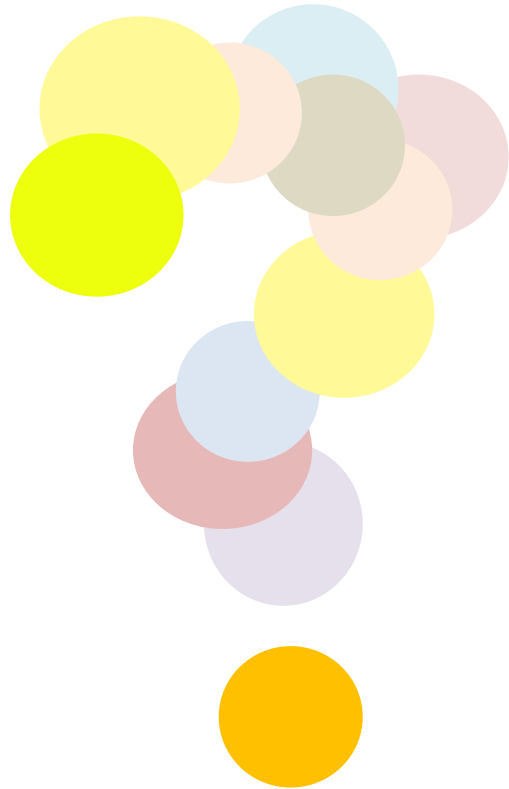
-  What Is Toll Manufacturing
-  Why Other Company Use Toll Manufacturing Service?
-  Be Our Partner
-  Types Of Toll Manufacturing at PYFA
-  Original Equipment Manufacturer (OEM) Products
-  Coverage Service For Toll Manufacturing
-  Meet Our Partner

# What Is Toll Manufacturing



Toll Manufacturing (*Maklon*) or Cut Make Trim (CMT) is manufacture product service for others in accordance with the specifications that have been determined by the customer.

# Why Other Company Use Toll Manufacturing Service?



**1. Customer Request**  
Customer fulfill all of the description on Toll Manufacturing Request Form  
**Estimated Time: 1 day**



**2. Discussion**  
Our representative person will contact you regarding the sampling, formulation, design of the products, and others  
**Estimated Time: 15 day**



**3. Dealing**  
If all of the requirement regarding the product has been done. Our representative person will contact you regarding to the drafting of Agreement  
**Estimated Time: 2 day**



**4. Product Registration**  
The product will be registered the related parties until the product can be released  
**Estimated Time: 90-120 day**



**6. Manufacturing Process**  
Factory manufacture the product  
**Estimated Time: 45 day**



**5. Customer Sends Purchase Order (PO) to Us**  
After the product registration has been done and NIE (Nomor Izin Edar) has been released, Customer has to send PO to us  
**Estimated Time: 1 day**

# Be Our Partner



# Types Of Toll Manufacturing at PYFA



## **Manufacturing Services**

The efficiency and effectiveness of productions are the major key to elevate your business. By our lengthy experience, we will be assisting you to achieve that key through our manufacturing service which gives you the high-level production systems based on your specifications for your products.

## **OEM (Original Equipment Manufacturer)**

To strengthen your competitive advantage, improve your overall performance and secure new business opportunities. Through our range of products, we will help you to penetrate the market under your own brand.

## **Secondary Brand**

Acquiring new strategy to beat the market with our special service. We provide our “Second Brand” service to enter the market with your own brands. Your brand will be registered under our name, however it will be produced solely for you

## **Secondary Brand**

We certainly strive to convert products from idea into market in the shortest possible time, while ensuring we complete the necessary steps to give your products the greatest chance to succeed in the marketplace. We provide A – Z services:

- Registration
- Product development
- Manufacturing processes
- Warehousing, and more.



## PRESCRIPTION





# Coverage (Service) For Toll Manufacturing



## Capability

- Solid Form
  - Tablet
  - Caplet
  - Capsule
  - Effervescent Tablet
  - Granule
- Liquid Form
  - Syrup
  - Dry Syrup
  - Suspension
- Semi Solid
  - Cream
  - Ointment



## Facilities

- Beta-Lactam
- Non –Beta Lactam
- Supplement
- Traditional medicine



## Certificates

- GMP Certificate in Traditional Medicine
- GMP Certificate (CPOB) in Pharmaceutical products
- Halal Certificate
- ISO/IEC 17025:2017, ISO 9001
- SDAK – Medical devices distribution
- PKRT/Household Supplies Production Certificate
- Repack Medical Device Facility (on process)

# Meet Our Partner







 Original Equipment Manufacturer (OEM)





**Alone We Can Do So Little  
Together We Can Do So Much  
-Helen Keller-**



# Contact Us



## Head Office

Sinarmas MSIG Tower, 12th Floor  
Jl. Jend. Sudirman No.Kav. 21,  
RT.10/RW.01, Kuningan, Karet, Kecamatan  
Setiabudi, Kota Jakarta Selatan,  
Jakarta 12920 – Indonesia

Phone: +62-21-509-91067

Website: <https://www.pyfa.co.id/contact-us/>